

SP16 montaža na ploščo, vodoodporen kabelski konektor IP68

Oznake izdelkov:

Koda izdelka: AM7187

EAN13: -

HS kód: 85369010



Parametri izdelka:

Material ohišja: Plastika

Pokritost: IP68

Namestitev: S spajkanjem

Variante izdelkov:

Število zatičev: 2-pin, 3-pin, 4-pin, 5-pin,
6-pin, 7-pin, 9-pin

Opis izdelka:

Vodoodporni panelni konektor za žice s premerom 5,5 - 8 mm. Pozlačeni kontakti.

| Tip: SP16 | 2-pinski | 3-pinski | 4-pinski | 5-pinski | 7-pinski | 9-pinski |
|----------------------|----------|----------|----------|----------|----------|----------|
| Premer stika | 1,8 mm | 1,8 mm | 1 mm | 1 mm | 1 mm | 1 mm |
| Nazivni tok | 10A | 5A | 5A | 5A | 5A | 5A |
| Nazivna napetost | 250 V | 250 V | 250 V | 250 V | 250 V | 250 V |
| Kontaktna upornost | 2mΩ | 2mΩ | 5mΩ | 5mΩ | 5mΩ | 5mΩ |
| Izolacijska upornost | 2000 mΩ | 2000 mΩ | 2000 mΩ | 2000 mΩ | 2000 mΩ | 2000 mΩ |

Največji tok: 10A

Največja napetost: 250 V AC

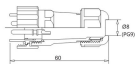
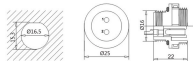
Zaščita: IP68

Delovna temperatura: -20 - 110°C

Relativna vlažnost: 90 % - 95 %

Material: Poliamid

Galerija:



| SP16 | 02 | 03 | 04 | 05 | 07 | 08 |
|----------------------------|-------|-------|-------|-------|-------|-------|
| Wiring diagram | | | | | | |
| Contact diameter | Ø16.2 | Ø16.2 | Ø16.4 | Ø16.2 | Ø16.2 | Ø16.2 |
| Rated current (A) | 16 | 16 | 16 | 16 | 16 | 16 |
| Rated voltage (V) | 250V | 250V | 250V | 250V | 250V | 250V |
| Test voltage (V) | 1000V | 1000V | 1000V | 1000V | 1000V | 1000V |
| Contact resistance (mΩ) | 2 | 2 | 3 | 3 | 3 | 3 |
| Insulation resistance (MΩ) | 2000 | 2000 | 2000 | 2000 | 2000 | 2000 |