

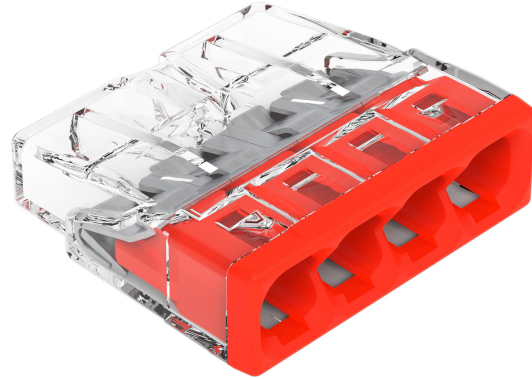
Connection clamp WAGO PUSH WIRE 2273-204

Product codes:

Reference: AM3584

EAN13: 4050821027850

UPC: 85044090



Product features:

Current: 24 A

Rated voltage: 450 V

Number of pins: 4-pin

Product attributes:

Product description:

The WAGO 2273 PUSH WIRE installation terminal is designed for quick connection of solid conductors by direct insertion without the use of tools. The design with 4 connection points is suitable for electrical installation connections in confined spaces, where a compact solution and clear control of the conductor insertion are required.

Technical specifications

- Product type: connecting clamp
 - Series: WAGO 2273
 - Connection technology: PUSH WIRE
 - Number of connection points: 4
 - Number of potentials: 1
 - Control method: direct insertion
 - Designed for solid conductors
 - Conductor cross-section: 0.5-2.5 mm²
 - AWG: 20-16
 - Stripping length: 11 mm
 - Connection direction: lateral
 - Material of connectable conductors: copper, aluminum
 - Rated voltage: 450 V
-

- Rated current: 24 A
- Rated impulse voltage: 4 kV
- Ambient air temperature during operation: up to +60 °C
- Continuous operating temperature: 105 °C
- Temperature designation according to EN 60998: T60
- Insulation material: polycarbonate (PC)
- Body color: transparent
- Cover color: red
- Flammability class according to UL94: V2
- Material group: IIIa
- Clamp dimensions: 18 x 5.8 x 16.7 mm
- Weight of one clamp: 1.3 g

Functions and features

- Compact design for use in installation boxes and other confined spaces
- Spring connection technology enables quick and repeatable wire insertion
- Transparent housing allows visual inspection of correct wire insertion
- Test hole allows measurements in installed condition
- Designed for connecting solid conductors at one potential

Ideal for

- Electrical wiring in installation boxes
- Connecting fixed conductors in internal distribution systems
- Repairs and modifications of fixed electrical installations
- Installations where quick screwless wire connections are required

Package contents

- 1x WAGO 2273 PUSH WIRE installation terminal, 4 wires

Why choose this product?

- Known and unambiguous technical parameters for solid conductors in the range of 0.5–2.5 mm²
- Four connection points in a compact body
- Direct wire insertion simplifies assembly without screwing
- Transparent design makes it easy to check connections during installation
- The parameters of nominal voltage, current and temperature resistance correspond to use in electrical installations

Installation and operating instructions

- Use only for solid conductors within the specified cross-section range
-

- Strip the wire to a length of 11 mm and insert it straight in until it stops.
- Before commissioning, check that the wire is fully inserted through the transparent housing.
- The functionality of the connection can be verified via the test hole

Safety notice

- The product is intended for electrical installations with voltages up to 450 V.
- Only carry out installation and interventions when the power supply is disconnected.
- Incorrect wiring may lead to short circuit, overheating or electric shock.
- Observe the specified wire type and the prescribed cross-section range.
- Installation in fixed electrical installations should be carried out by a person with appropriate professional qualifications.

Product gallery:

