

Metal holder (snap-in) for SSR relays on 35 mm DIN rail

Product codes:

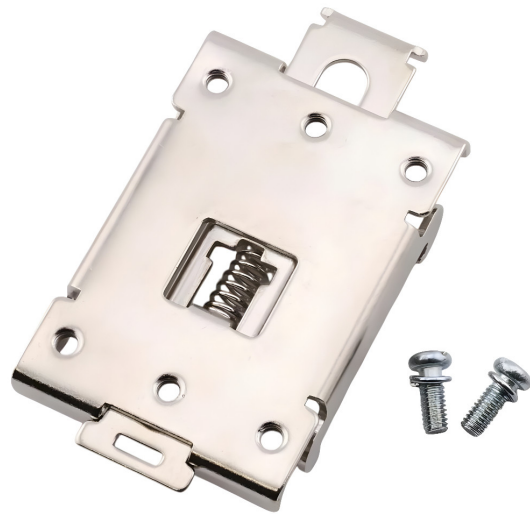
Reference: AM3642

EAN13: -

UPC: 85364190

Product features:

Color: Silver



Product attributes:

Product description:

The metal snap-in mounting bracket is designed for quick mounting of SSR relays on a standard 35 mm DIN rail. The spring-lock design allows for easy mounting and removal without the need for complex accessories and is suitable for installations in switchboards and industrial applications.

Technical specifications

- Type: holder / clamp for attaching relays to DIN rail (relay snap / relay clamp)
- Rail compatibility: DIN 35 mm
- Material: metal design
- Mounting mechanism: spring lock (snap-in)
- Brand: EARU
- Dimensions (according to drawing): 80.0 mm; 44.20 mm; 34.0 mm; 47.50 mm; 13.40 mm; 1.5 mm
- Mounting thread (according to drawing): 6-M4
- Packaging: 1 pc

Functions and features

- Allows mechanical mounting of SSR relays on a 35 mm DIN rail
 - Metal construction for a solid and stable mount
 - Spring lock for quick assembly and disassembly on the rail
 - Mounting holes for screwing the relay to the bracket
-

Ideal for

- Mounting SSR relays in switchboards and control cabinets
- Industrial automation and machine control cabinets
- Service and prototype installations where quick component replacement is required

Package contents

- 1 pc. holder for 35 mm DIN rail
- Mounting screws

Why choose this product?

- Standard 35 mm DIN mounting for common cabinet applications
- Quick handling thanks to snap-in mechanism
- Metal design suitable for fixed mounting of components

Installation and operating instructions

- Snap the holder onto the 35 mm DIN rail and check that the lock is properly seated.
- Fasten the relay to the bracket using suitable screws in the mounting holes.
- Before mounting, verify spacing and compatibility with specific SSR relay type

Safety notice

- The bracket is a mechanical component; the electrical safety of the installation depends on the correct mounting of the relay and the wiring of the entire device
- When working in the switchboard, follow applicable safety procedures and disconnect power before working on the installation.

Product gallery:

