

# Laser module red 635nm, D8x18mm, point

## Product codes:

Reference: AM9572

EAN13: -

UPC: 90132000

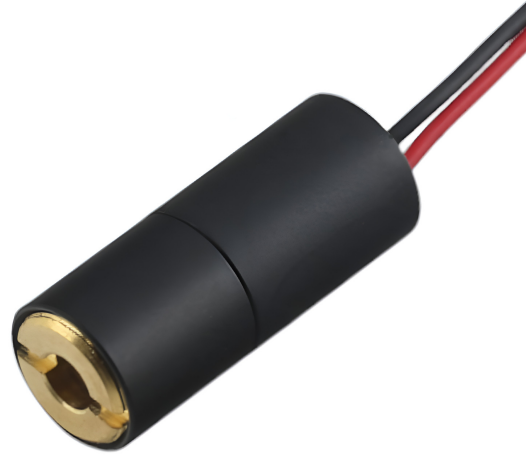
## Product features:

Wavelength: 635 nm

Voltage: 3-5 V DC

Color: Red

Waterproof grade: IP20



## Product attributes:

Performance: 0,5 mW, 1 mW, 5 mW, 10 mW

## Product description:

This industrial laser module with a red beam of 635 nm wavelength is ideal for measuring applications, alignment and other technical uses. Thanks to its compact dimensions and the possibility of adjusting the focus, it provides flexible use in various industrial projects.

## Technical specifications

- **Operating mode:** CW (Continuous Wave)
  - **Wavelength:** 635 nm (red laser)
  - **Lens:** PMMA
  - **Focus:** Adjustable Focus
  - **Module dimensions:** Ø8 x 18 mm
  - **Output power:**
    - 0.5mW (0.25-0.39mW)
    - 1mW (0.7-0.9mW)
    - 5mW (2.5-3.5mW)
    - 10mW (7.5-8.5mW)
  - **Operating voltage:** 3V/5V DC
-

- **Operating current:** 50-200 mA, max. 300 mA
- **Power stability:** 10%
- **Divergence angle:** 1 mrad
- **Operating temperature:** -10°C to +40°C
- **Storage temperature:** -40°C to +85°C
- **Housing material:** Brass/aluminum
- **End cap sealing:** Silicone
- **Lifespan:** > 8,000 hours

### Functions and features

- Adjustable focal length for precise focusing at the desired distance.
- Compact and durable brass/aluminum housing.
- Stable performance with low beam dispersion (1 mrad).
- Long service life thanks to high-quality materials and solid design.
- Easy integration into industrial measurement and positioning systems.

### Ideal for

- Measuring and surveying tools.
- Laser pointers and target systems.
- Industrial automation and control applications.
- Educational and experimental projects.

### Package contents

- 1× Laser module D8x18mm, 635nm, according to the selected power variant (0.5mW / 1mW / 5mW / 10mW)

### Why choose this product?

- High quality and industry standard.
- Choice of four power options depending on the application.
- Adjustable focus for universal use.
- Compact size - easy installation even in limited spaces.
- Long service life and reliability in demanding conditions.
- Stable performance and precise red beam.

### Product gallery:

