

CSP M1 LED car bulb set with HB4 base, 9006, 4000lm, 12-24V - White, 6500K

Product codes:

Reference: AM9382

EAN13: -

UPC: 85392210

Product features:

Light color: White

Color temperature: 6000-6500 K

Angle of light: 360°

Patience: HB4 / 9006

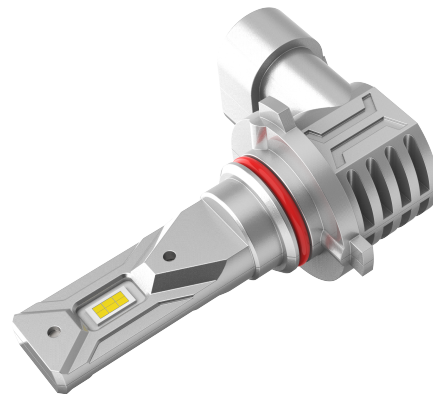
LED type: CSP3570

Voltage: 12-24 V DC

Number of LEDs: 2

Waterproof grade: IP67

Lifetime: 30,000 hours



Product attributes:

Product description:

Introducing universal LED car bulbs with a power of 20 W and a luminous flux of 2000 lm, ideal for improving visibility and safety while driving.

Key features:

- **High light output:** With a luminous flux of 2000 lm, these bulbs provide bright and intense lighting that improves visibility on the road.
 - **Universal Compatibility:** Designed for a wide range of vehicles, making them easy to install without the need for modifications.
 - **Advanced CSP3570 technology:** The use of modern LED chips
-

ensures higher efficiency and longer life compared to traditional halogen bulbs.

- **Energy efficiency:** With a power output of 20W, they consume less energy, reducing the load on the vehicle's electrical system.
- **Long service life:** High-quality construction and the use of durable materials guarantee long operating time and reliability.

Benefits of use:

- **Improved visibility:** Strong and bright light allows for better orientation at night and in adverse conditions.
- **Easy installation:** Thanks to the universal socket, replacement is quick and hassle-free.
- **Energy saving:** Lower electricity consumption contributes to more efficient vehicle operation.

Technical specifications:

Socket type: HB4, 9006

Luminous flux: 2000 lm

Power: 20W

LED chip technology: CSP3570

Voltage: 12-24V DC

Package contents: 2x bulb, manual

Product gallery:

