

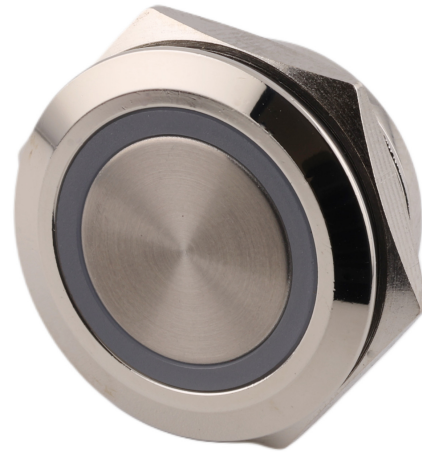
Metal switch without latching, RGB LED backlight, diameter 25mm, 12-24V DC

Product codes:

Reference: AM0055

EAN13: -

UPC: 85365080



Product features:

Light color: RGB

Voltage: 12-24 V DC

Housing material: Stainless steel

Waterproof grade: IP65

Mounting hole: 22 mm

Max. switching current: 3 A

Locking: No

Product attributes:

Product description:

Max. voltage: 12-24V/3A

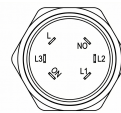
Mounting diameter: 20mm

Switch diameter: 25mm

Protection: IP65

Size: 25x25x15mm

Product gallery:



Pin	Description
NO	Switch foot
L	Common feet of the Light
L1	Red LED
L2	Green LED
L3	Custom color (Yellow/Blue/White)

