

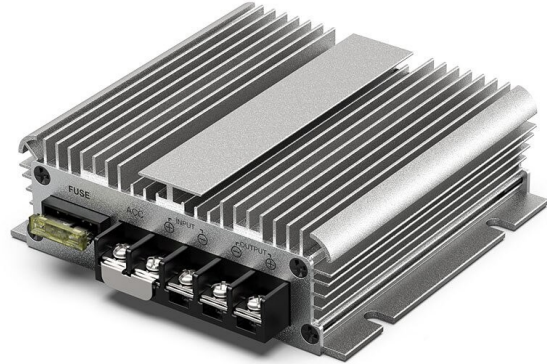
# Voltage converter from 40-90V to 12V, 20A, 240W, IP67

## Product codes:

Reference: AM1156

EAN13: -

UPC: 85044090



## Product features:

Input voltage: 48 V DC

Input voltage: 60 V DC

Input voltage: 72 V DC

Output voltage: 12 V DC

Output current: 20 A

Output power: 240 W

Waterproof grade: IP68

Lifetime: 100,000 hours

## Product attributes:

## Product description:

Very high quality DC/DC voltage converter from 48V/60V/72V DC to 12V DC max. 20A.

## Very wide input voltage range.

Input voltage: 48V, 60V, 72V DC (40-90V DC range)

Output voltage: 12 V DC, max. 20A

Efficiency: 95%

No-load consumption: max. 30mA

Protection against overload, overvoltage, overheating, short circuit

Aluminum construction with fins for heat dissipation

Certificates: CE, ROHS

Working temperature: -40 ~ +80 °C

Ambient humidity: 0~95%

Protection: IP67

Size: 118x113x35mm

---

Weight: 700

**Product gallery:**

