

# Voltage converter from 36V/48V to 12V, 40A, 480W, IP67

## Product codes:

Reference: AM0205

EAN13: -

UPC: 85044090

## Product features:

Input voltage: 36 V DC

Input voltage: 48 V DC

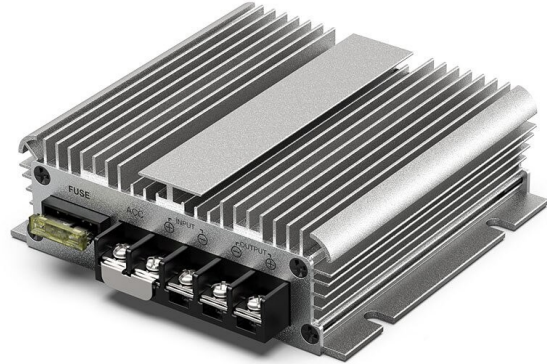
Output voltage: 12 V DC

Output current: 40 A

Output power: 480 W

Waterproof grade: IP68

Lifetime: 100,000 hours



## Product attributes:

## Product description:

Very high quality DC/DC voltage converter from 36V/48V DC to 12V DC max. 40A.

## Very wide input voltage range.

Input voltage: 36V/48V DC (range 30-60V DC)

Output voltage: 12 V DC, max. 40A

Efficiency: 95%

No-load consumption: max. 20mA

Protection against overload, overvoltage, overheating, short circuit

Aluminum construction with fins for heat dissipation

Certificates: CE, ROHS

Working temperature: -40 ~ +80 °C

Ambient humidity: 0~95%

Protection: IP67

Size: 118x113x35mm

Weight: 700g

---

## Product gallery:

