

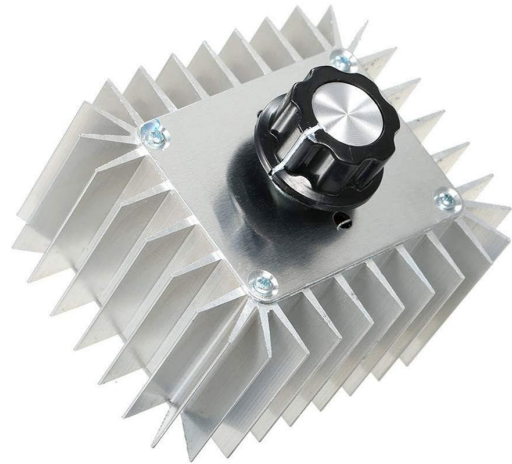
Voltage regulator, electric motor speed SCR 230V AC max. 5000W

Product codes:

Reference: AM0699

EAN13: -

UPC: 85044090



Product features:

Current: 23 A

Input voltage: 220-240 V AC, 50/60 Hz

Performance: 5000 W

Product attributes:

Product description:

The SCR regulator is designed for smooth control of the output AC voltage and thus the power of the connected load. It is typically used for regulating heating elements and filament light sources, or for controlling simple AC motors with a commutator. The design with an aluminum heat sink is designed to dissipate heat loss at higher loads.

Technical specifications

- Input voltage: AC 230 V
- Output voltage: AC 0-230 V (when regulating from low voltage, approximately 20 V can be achieved)
- Maximum power: 5000 W (short-term)
- Recommended continuous load: up to 2200 W (at room temperature)
- Efficiency: $\geq 90\%$
- Dimensions: 85 × 70 × 40 mm (without control knob and terminals)
- Material: aluminum heat sink/cover for better heat dissipation
- Operating humidity: 0-95%
- Use: for indoor installation only

Functions and features

- Continuous output voltage regulation using a rotary potentiometer
- Screw terminals for connecting wires
- Designed primarily for resistive loads (heaters, filament bulbs)
- Possible use for simple AC motors with commutator (e.g. drills, vacuum cleaners, some fans without capacitor)
- **Not intended for switched power supplies and inductive loads; unsuitable for induction cookers and most LED light sources**
- A load must be connected for regulation.
- **Not recommended for use with 110V mains powered devices**

Ideal for

- Regulation of the power of heating coils, heaters and radiators
- Brightness control of light bulbs and other filament light sources
- Speed control of selected simple AC motors without capacitor
- Laboratory and workshop applications for smooth power control of resistive loads

Package contents

- 1× SCR voltage/power regulator

Why choose this product?

- Wide output voltage regulation range for resistive loads
- Aluminum construction for more efficient heat dissipation
- Simple potentiometer control and connection via screw terminals
- Suitable solution for applications where continuous power control without feedback is required

Installation and operating instructions

- Load must be connected for proper voltage regulation
- Only suitable for simple AC motors with a commutator (e.g. drills, vacuum cleaners, some fans without a capacitor)
- Not suitable for single-phase induction motors with run capacitor (PSC) - there is a risk of torque loss, overheating and noise
- For capacitor motors, we recommend using a special speed controller for PSC motors or an autotransformer controller.
- Ensure sufficient ventilation and heat dissipation from the heatsink during higher loads

Safety notice

- The product operates with AC 230V voltage - risk of electric shock
 - Installation and connection may only be carried out by a suitably qualified person.
-

- Always disconnect the device from the power supply before installation or maintenance.
- Do not exceed the maximum permitted power and adhere to the recommended continuous load.
- Protect the device from moisture, dust and mechanical damage.
- Use only indoors with adequate ventilation.

Product gallery:

