

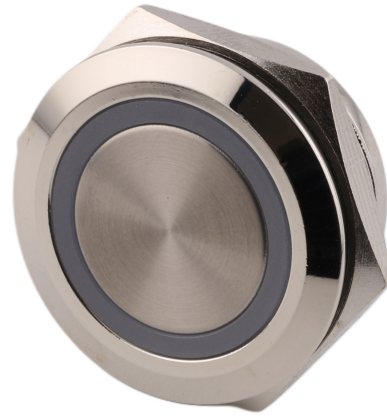
Metal switch without locking, RGB LED backlight, diameter 22mm, 12-24V DC

Product codes:

Reference: AM6626

EAN13: -

UPC: 85365080



Product features:

Light color: RGB

Voltage: 12-24 V DC

Housing material: Stainless steel

Waterproof grade: IP65

Mounting hole: 19 mm

Max. switching current: 3 A

Locking: No

Product attributes:

Product description:

Max. voltage: 12-24V/3A

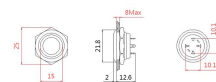
Mounting diameter: 19mm

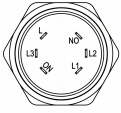
Switch diameter: 21.8mm

Coverage: IP65

Size: 22x22x15mm

Product gallery:





Pin	Description
NO	Switch foot
L	Common feet of the Light
L1	Red LED
L2	Green LED
L3	Custom color (Yellow/Blue/White)