

Bridge rectifier MB6F

Product codes:

Reference: AM1032

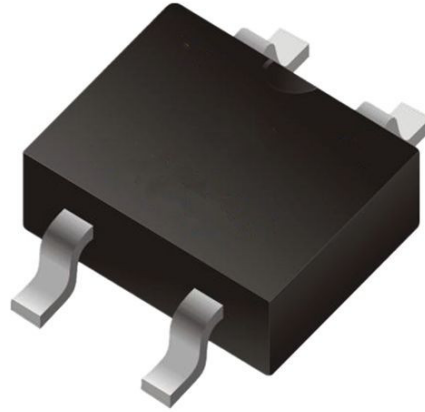
EAN13: -

UPC: 85429000

Product features:

Housing: F-SOP-4

Execution: SMD



Product attributes:

Product description:

Maximum closing voltage: 600V

Current in forward direction I_f : 0.5A

Maximum impulse current: 35A

Temperature range: -65 to +125 °C

Case: F-SOP-4

Product gallery: