

Electromagnetic door lock with opening indicator light option K02, 150kg

Product codes:

Reference: AM5935

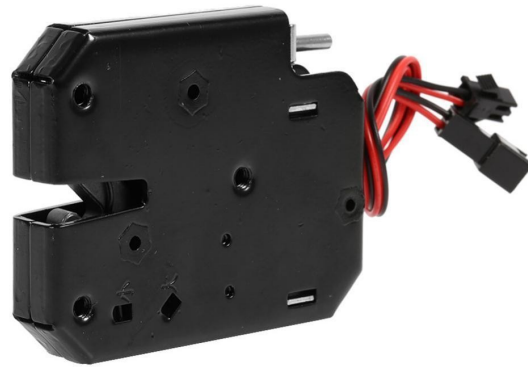
EAN13: -

UPC: 83014090

Product features:

Connector: JST SM 2-pin

Waterproof grade: IP22



Product attributes:

Tension: 5 V DC, 12 V DC, 24 V DC

Product description:

The electromagnetic lock is designed for securing doors and flaps in applications where electrical unlocking and status signaling are required. In the idle state, the lock remains closed, and after applying the triggering voltage, it releases the latch. It includes a terminal for a control lamp or a status signal for opening and closing the door.

Technical specifications

- Type: electromagnetic door lock
 - Working mode: locked when no voltage is applied, unlocked when voltage is applied
 - Voltage/current: 5V DC / 1.5A, 12V DC / 2A, 24V DC / 1A (depending on variant)
 - Maximum latch load: 150 kg
 - **Maximum time under voltage: 0.5 s**
 - Working temperature: -40 to 60 °C
 - Inner part material: carbon steel
 - Surface finish: black powder coating (komaxit)
 - Dimensions: 73 x 58 x 13 mm
-

- Cable length: 170 mm
- Mechanical life: 500,000 cycles
- Electromagnet life: more than 1,000,000 operating cycles
- Signal output: switching contact, open when unlocked, closed when locked

Functions and features

- The lock works as a separate locking unit with electric release.
- The design allows installation without restrictions on left or right orientation.
- It includes a counter piece with a catch bracket for mechanical door locking.
- The lock is equipped with a status feedback output.
- The feedback wire functions as a potential-free switching contact to signal the lock status.
- In the locked state, the feedback contact is closed, in the unlocked state, the contact is open.
- This output can be used for a control light, control unit input, microcontroller or security system that monitors whether the lock is in the locked state.
- The feedback output is not used to power the lock, but only to transmit information about the contact status.
- The mechanism has adjustable elasticity for doors weighing 0.5 to 4 kg.

Ideal for

- dispensing boxes
- service and self-service lockers
- mailboxes and newspaper boxes
- cooling boxes and cabinets
- storage and wardrobes
- library and lending boxes

Package contents

- 1x electromagnetic lock
- 1x latch counterpiece

Why choose this product?

- It enables electrical unlocking and at the same time provides a status signal to check the lock position.
 - Carbon steel construction is designed for repeated use.
 - Compact dimensions make it easy to install in smaller doors and boxes.
 - The voltage-free locked operating mode is suitable for applications
-

where the lock should remain closed after a power failure.

Installation and operating instructions

- Before installation, verify that the supply voltage and current load match the power supply and control circuit used.
- Install the lock so that the counterpiece is in the exact position relative to the latch and there is no mechanical tension.
- Use the signal wires only as a status contact, not for direct power supply to the load without a corresponding intermediate stage.
- Observe a maximum opening time of 0.5 s.

Safety notice

- The product is an electrical component and requires proper wiring. Incorrect polarity, improper voltage, or overloading may damage the lock or power circuit.
- Perform installation and connection with the power disconnected.
- When installing in access, dispensing or locking systems, ensure mechanical locking and safe emergency opening.
- Do not use the lock outside the specified temperature conditions and do not expose it to environments for which it is not intended.

Product gallery:

