

# SMD LED Diode 30W, Warm White 3000-3500K, 12-15V DC

## Product codes:

Reference: AM2883

EAN13: -

UPC: 85414100

## Product features:

Light color: Warm white

Color temperature: 3000-3500 K

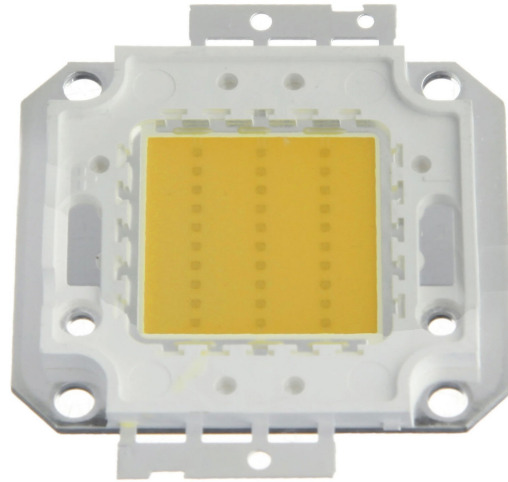
Angle of light: 120-130°

Luminosity: 2400-2600 lm

Current: 2400-2800 mA

Voltage: 12-15 V DC

Performance: 30 W



## Product attributes:

## Product description:

The LED parameters can be found in the product specification.

## Product gallery:

